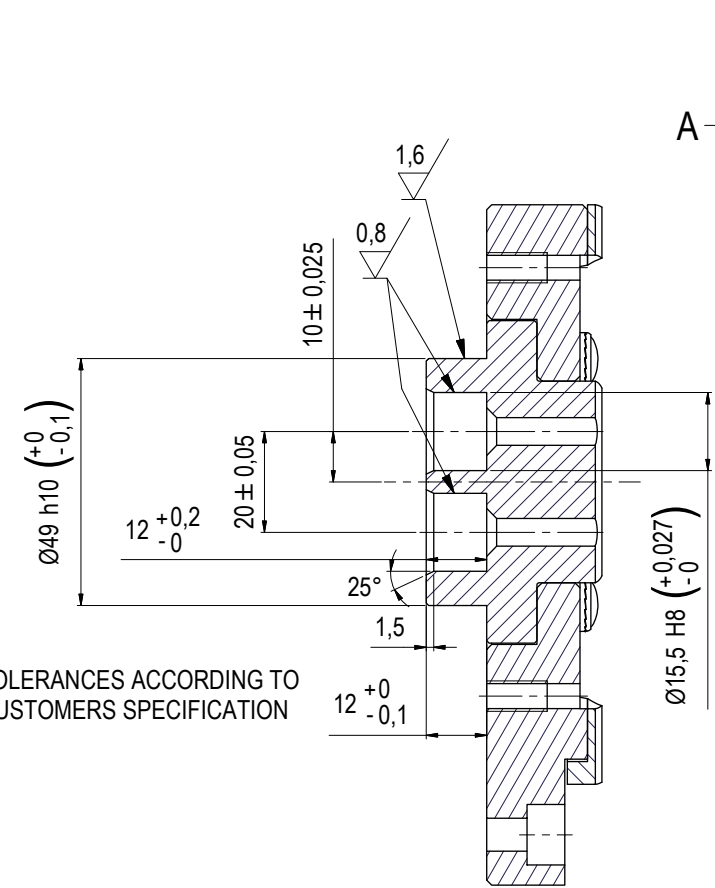


NOTE 1
 STANDARDS:
 API 6A

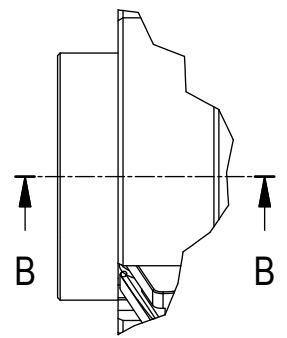
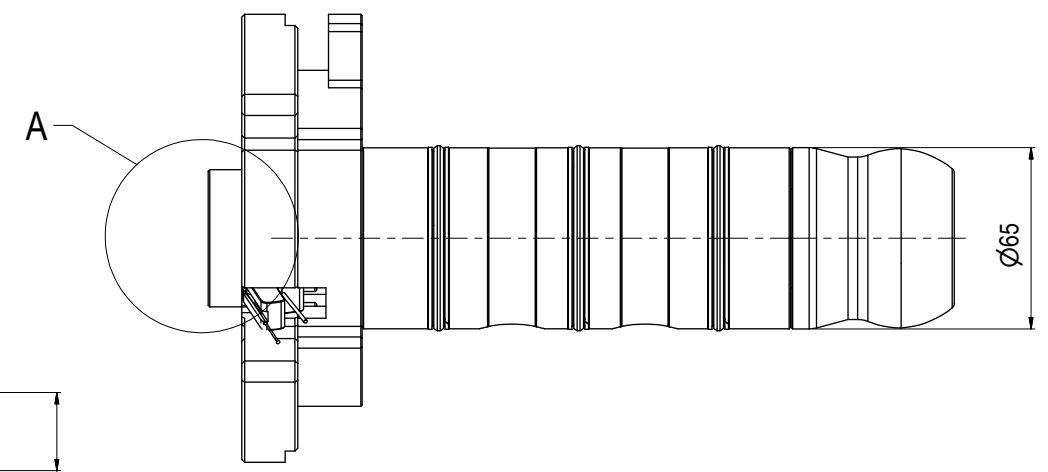
NOTE 2
 PROPERTIES:
 Rated Work Press Bar: 690
 Application: Long-term
 Weight in Air: 8,1 kg
 Volume: 1,14 dm³
 Submerged Weight: 6,92 kg

NOTE 3
 Operational torque mated with receptacle approx 30Nm

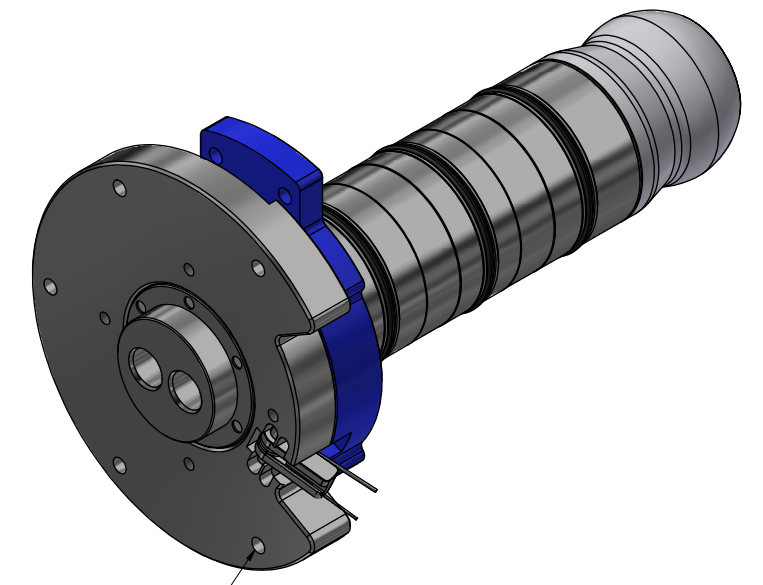


TOLERANCES ACCORDING TO CUSTOMERS SPECIFICATION

SECTION B-B



DETAIL A



5x $\varnothing 6,5$ Hole for external connection outside the HPU.

05	8.8.2025	9-IFU (Issued for Use)		HNJ	TAN	HNJ
04	20.5.2025	7-IFC (Issued for Construction)		WTJ	KOS	HNJ
03	10.6.2024	7-IFC (Issued for Construction)		WTJ	HNJ	WTJ
02	14.9.2023	7-IFC (Issued for Construction)		LGH	EKJ	LGH
Rev.	Date	Reason for issue	Revision change	Made	Chk'd	Appr.

BLUE LOGIC

This Drawing is the Property of Blue Logic AS © and must Not be Loaned, Reproduced or Transferred to others without written Permission

Dwg Scale:	NTS
Dwg Proj:	
Dwg Format:	A3

Drawing title:	$\varnothing 65$ DP VStab 10k Long-term
Drawing number:	BB9764
Rev.	05